

We invite you to invest in raisin production and export



Project overview

Project scope

- Construction of a raisin production plant with capacity of 25 000 tons per year

Geography

- Tashkent Region

Financing

- **11 USD mn**

Timeline

- 2018 – concept design, construction, equipment procurement and installation
- 2019 – ramp-up to designed capacity, continuous operation

Investment terms

- Investor will have ownership of the entire business

Risk adjusted investor NPV **40 USD mn**

IRR USD **31%**

Business model: raisin production plant with 25 000 ton annual capacity

1. Full-cycle raisin production and distribution



2. Plant concept

Grapes delivery / raisin shipping area

Grape storage area (cooler)

Cleaning and sorting conveyor

Primary drying area

Secondary drying area

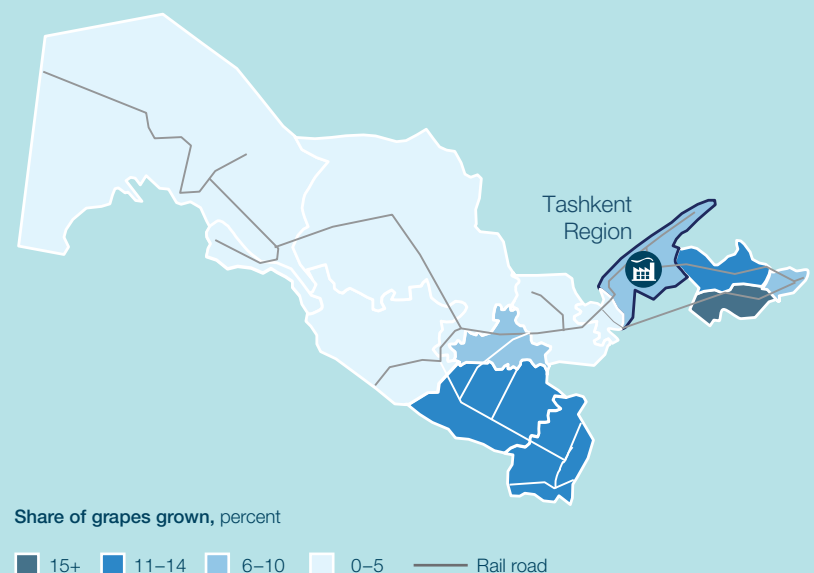
Market-ready raisins storage area (loose and packaged)

Raisins inspection area

Office buildings

Packaging

3. Location: Tashkent region



Contacts

State Investment Committee will be happy to answer any questions you may have

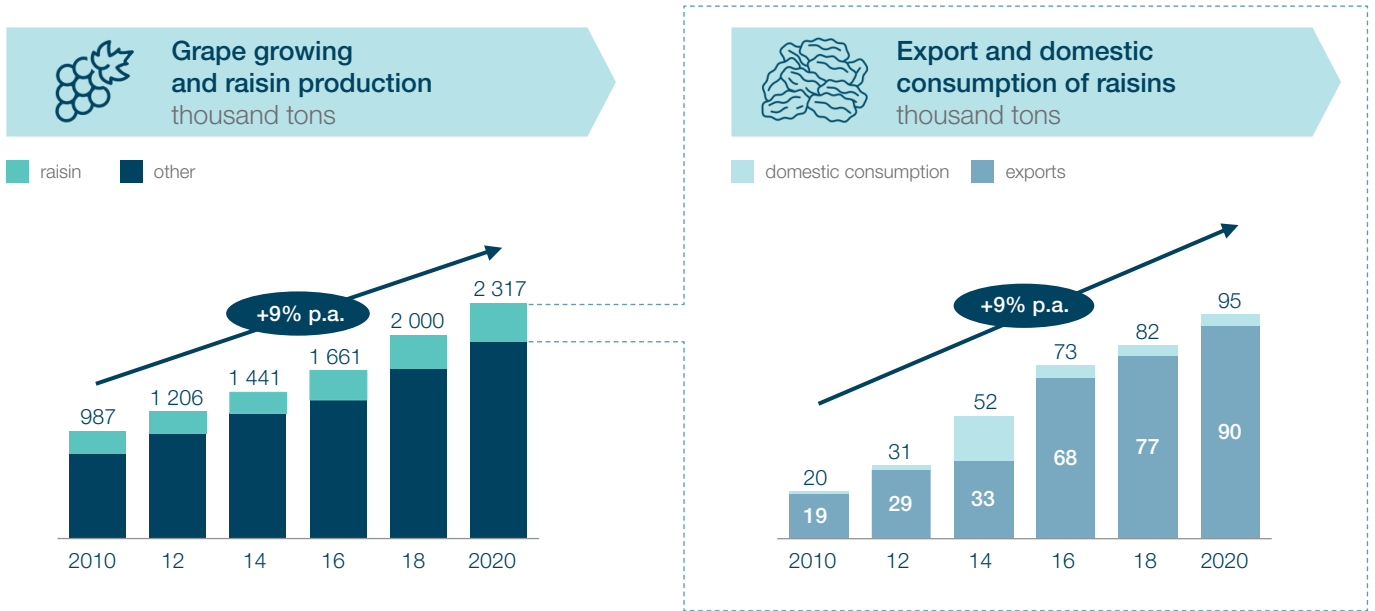
Contact person: Fozil Raim ogli Irgashev, Leading specialist

Telephone: +998 71 238 52 14

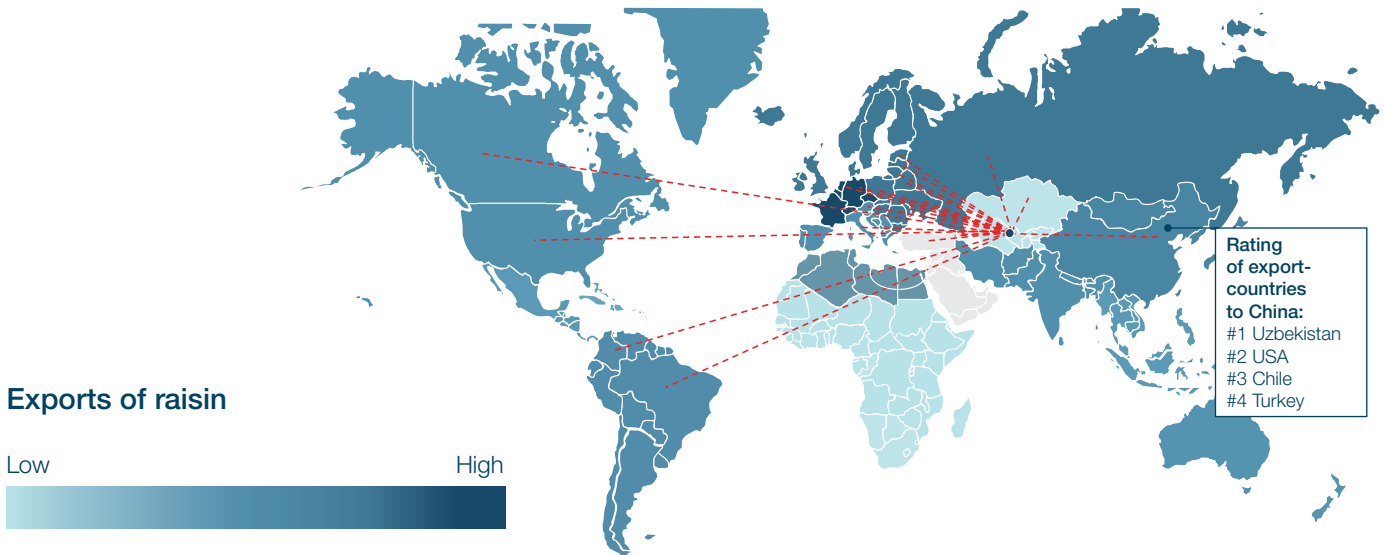
Postal address: 100029, Tashkent, Islam Karimov street, 1

E-mail: f.ergashev@invest.gov.uz

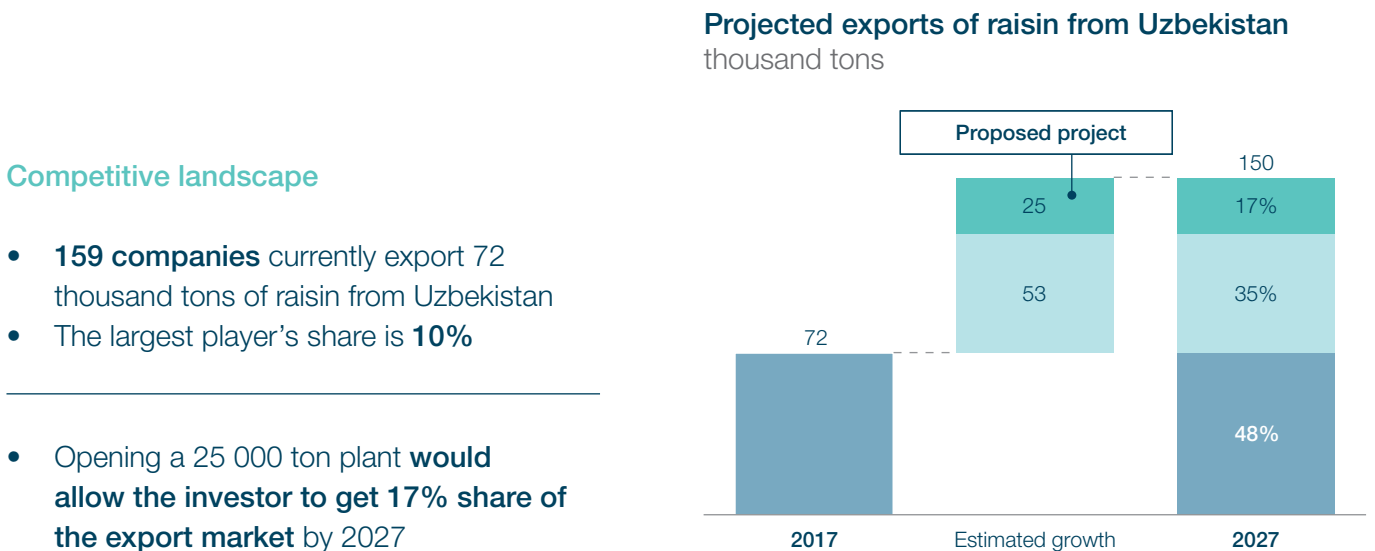
Demand: growing raisin export supported by increase in grape crops



Global demand: Uzbekistan already exports to the majority of key countries-importers and is China's #1 supplier



Proposal: 25 000 ton plant would enable the investor to become a leading player in Uzbekistan with 17% share of the export market



Competitive landscape

- **159 companies** currently export 72 thousand tons of raisin from Uzbekistan
- The largest player's share is **10%**
- Opening a 25 000 ton plant **would allow the investor to get 17% share of the export market by 2027**